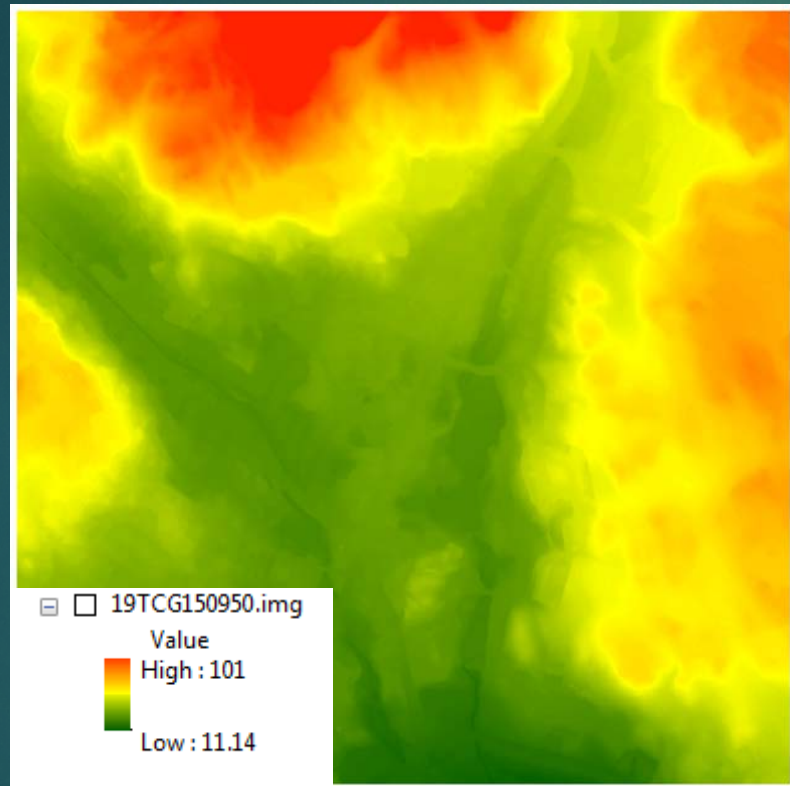
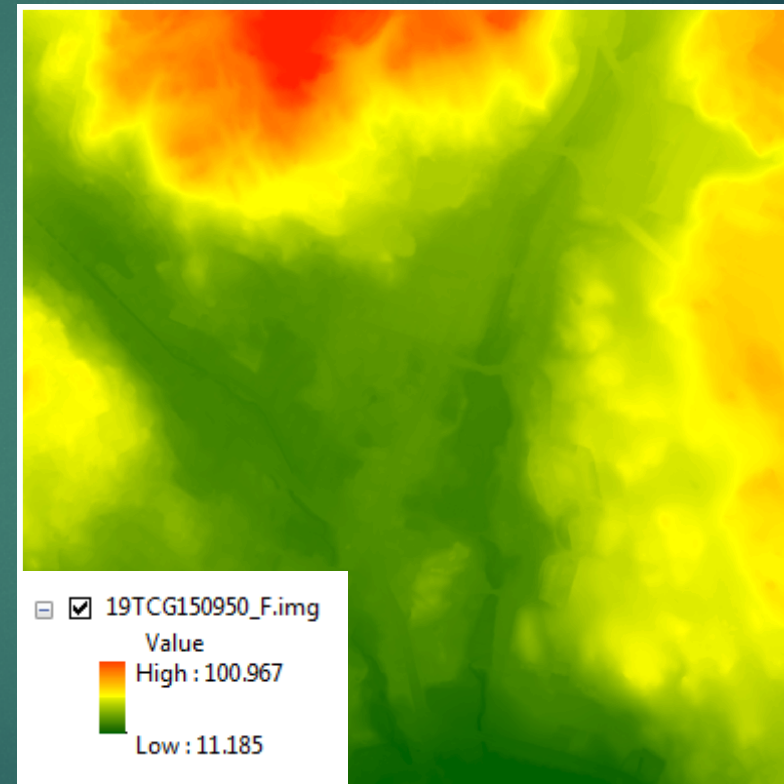


# DEM Tiles Unfiltered and Filtered

Unfiltered DEM



Filtered DEM (Low)



The image above shows the DEM on the left that has been filtered to using a LOW filter smoothing option which smooths the DEM by reducing the significance of anomalous cell values.



# DEM Tiles Unfiltered and Filtered

Unfiltered DEM



The image above shows 1 ft contours derived from a DEM using 3D Analyst and then smoothed using Smooth from the Cartography toolset with a PAEK smoothing factor of 20 ft.

Filtered DEM (Low)



The image above shows 1 ft contours derived from the same DEM smoothed using the Filter tool with a "Low Pass" filtering option in Spatial Analyst before the contours were created.